

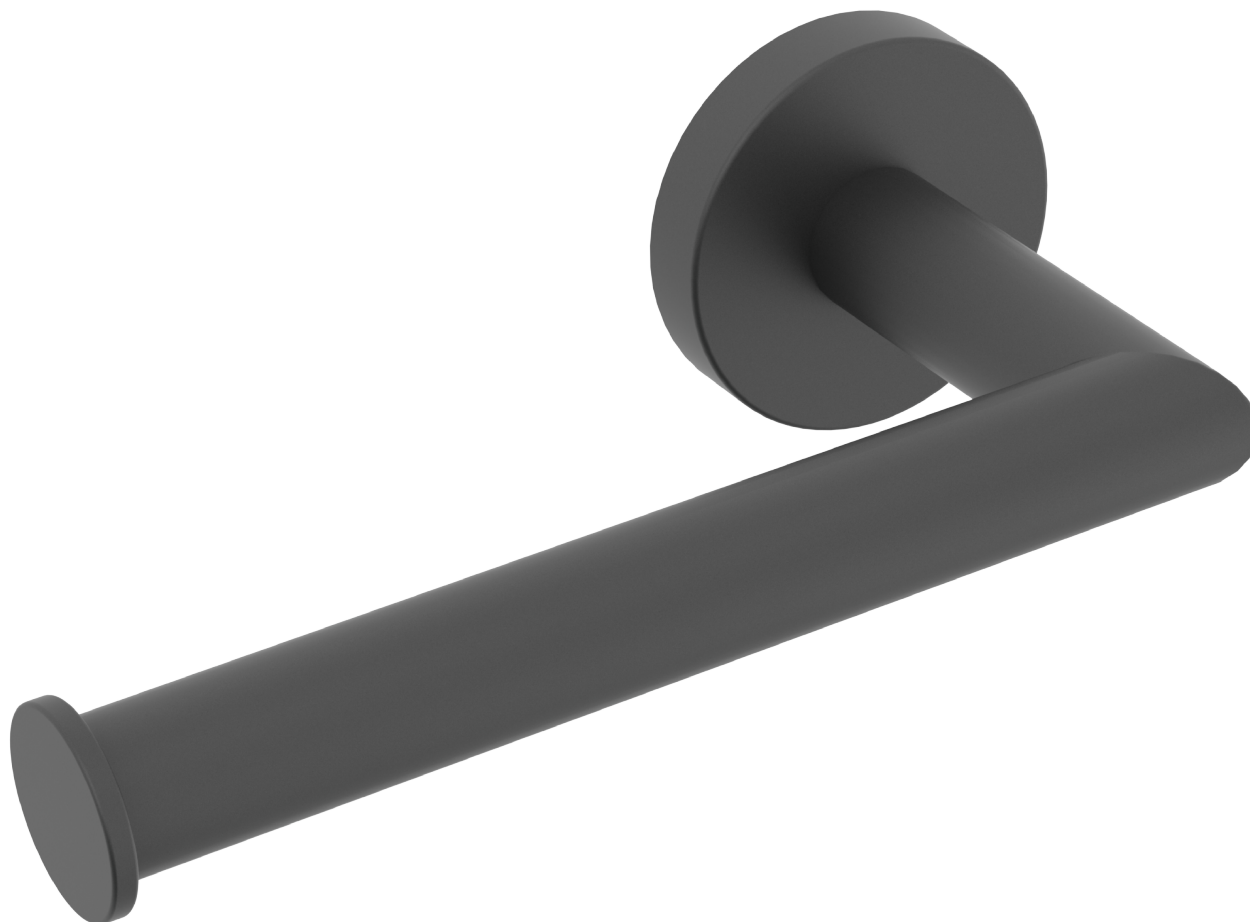
# Thompson Hotel Denver CO

TP Holder

VERSION

**A**

Location:



- Design & Dimensions subject to change
- Consult your Symmons Sales Representative for Timeline

REQUIRES:

---

"THIS DOCUMENT CONTAINS PROPRIETARY INFORMATION OF SYMMONS INDUSTRIES, INC. AND NEITHER THIS DOCUMENT OR ANY OF SAID PROPRIETARY INFORMATION SHALL BE PUBLISHED, REPRODUCED, COPIED, DISCLOSED OR USED FOR ANY PURPOSE WITHOUT THE EXPRESS WRITTEN PERMISSION OF A DULY AUTHORIZED REPRESENTATIVE OF SYMMONS INDUSTRIES, INC."

PRODUCT NAME:  
TP Holder

ADDITIONAL NOTE:  
---

DATE  
6/10/2019

SYMMONS MODEL#  
229-TP-MB

FLOW RATE:  
--

VERSION:  
A

TOOLING:  
No

FINISH:  
Matte Black

Approved by:

Approval Date:

Approval Signature:

  
**SYMMONS®**  
 SYMMONS INDUSTRIES  
 31 BROOKS DRIVE BRAINTREE, MA 02184  
 1-800-SYMMONS www.symmons.com

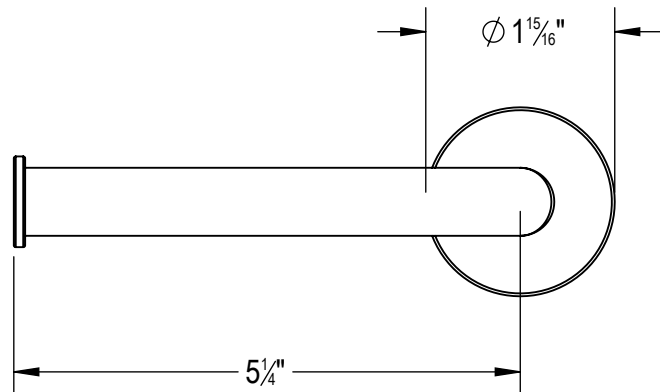
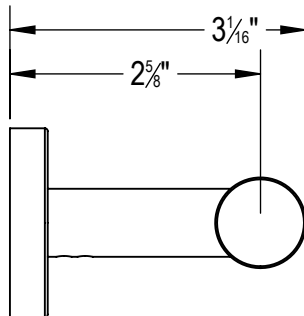
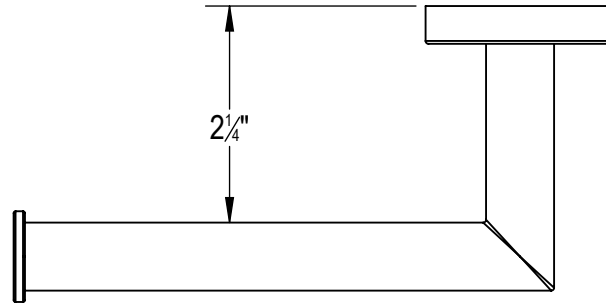
# Thompson Hotel Denver CO

TP Holder

VERSION

**A**

Location:



- Design & Dimensions subject to change
- Consult your Symmons Sales Representative for Timeline

REQUIRES:

---

PRODUCT NAME:  
TP Holder

ADDITIONAL NOTE:  
---

DATE  
6/10/2019

SYMMONS MODEL#  
229-TP-MB

FLOW RATE:  
--

VERSION:  
A

TOOLING:  
No

FINISH:  
Matte Black

Approved by:

Approval Date:

Approval Signature:

"THIS DOCUMENT CONTAINS PROPRIETARY INFORMATION OF SYMMONS INDUSTRIES, INC. AND NEITHER THIS DOCUMENT OR ANY OF SAID PROPRIETARY INFORMATION SHALL BE PUBLISHED, REPRODUCED, COPIED, DISCLOSED OR USED FOR ANY PURPOSE WITHOUT THE EXPRESS WRITTEN PERMISSION OF A DULY AUTHORIZED REPRESENTATIVE OF SYMMONS INDUSTRIES, INC."

**SYMMONS<sup>®</sup>**  
 SYMMONS INDUSTRIES  
 31 BROOKS DRIVE BRAINTREE, MA 02184  
 1-800-SYMMONS www.symmons.com