

**TUB/SHOWER TRIM**  
**MODEL: 0142-02-L/HD-SS-TRM**  
**INSTALLATION GUIDE**

**FEATURE HIGHLIGHTS**

Tub/Shower Trim shall include metal lever handle, shower arm with decorative flange and diverter tub spout. Tub/Shower Trim shall be metal construction plated in standard polished chrome finish.

**COMPLIANCE**

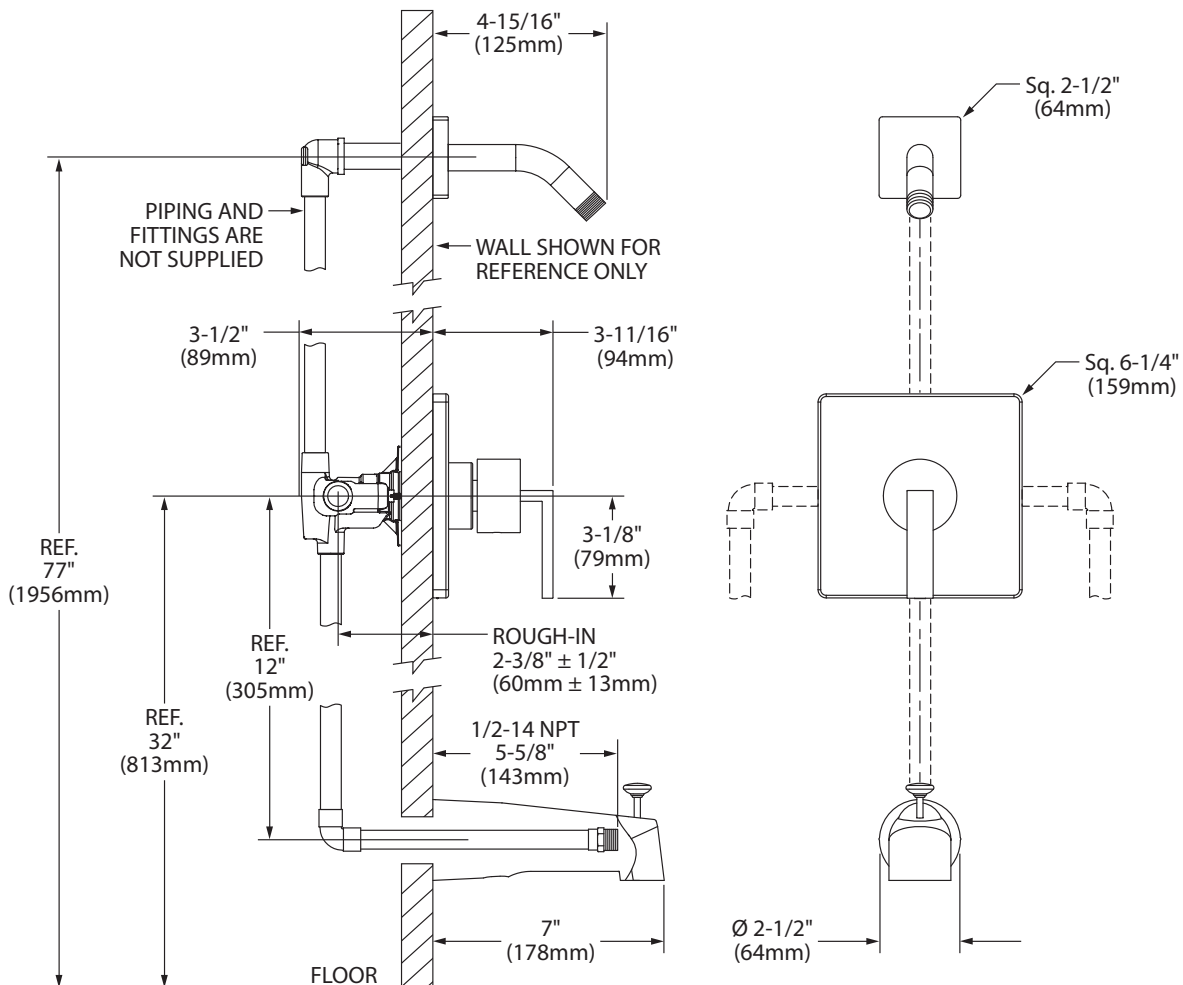
- ASME A112.18.1/CSA B125.1



**WARRANTY**

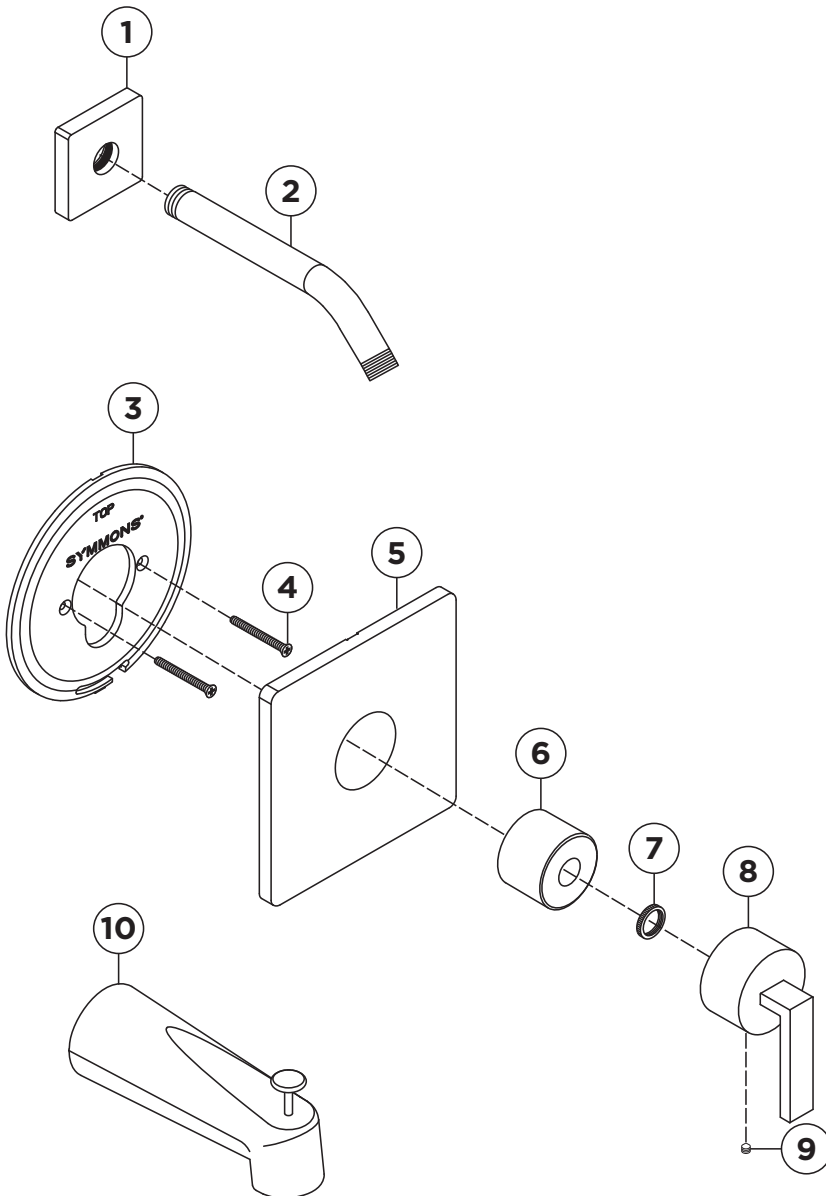
**5 Years** - for industrial/commercial installations.  
 Refer to [symmons.com/warranty](http://symmons.com/warranty) for complete warranty information.


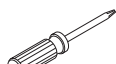

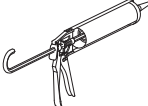
**DIMENSIONS**



**Note:** Dimensions subject to change without notice.

## INSTALLATION/PARTS BREAKDOWN



| Item                          | Description                                                                           | Part Number |
|-------------------------------|---------------------------------------------------------------------------------------|-------------|
| 1                             | Flange                                                                                | 300SQ       |
| 2                             | Shower Arm                                                                            |             |
| 3                             | Mounting Plate                                                                        |             |
| 4                             | Mounting Screws                                                                       | RTS-065     |
| 5                             | Shower Escutcheon                                                                     |             |
| 6                             | Dome Cover                                                                            |             |
| 7                             | Lock Nut                                                                              | T-19/20     |
| 8                             | Handle                                                                                |             |
| 9                             | Set Screw                                                                             | RTS-068     |
| 9                             | Set Screw                                                                             | TS-18A      |
| 10                            | Tub Spout                                                                             | 352TS       |
| Tools Required                |                                                                                       |             |
| Adjustable Wrench             |    |             |
| Allen Wrench:<br>Handle (3mm) |    |             |
| Phillips Head<br>Screwdriver  |    |             |
| Plumber Tape                  |   |             |
| Silicone                      |  |             |

### Notes:

- 1) Apply a bead of silicone around the perimeter of all shower trim installed flush to the finished wall (less mounting plates and brackets). Leave opening on bottom of escutcheon for weep hole.
- 2) Apply plumber tape to threaded connections as necessary.

**⚠ WARNING:** This product can expose you to chemicals including lead, which is known to the state of California to cause cancer, birth defects, or other reproductive harm. For more information, go to [www.P65Warnings.ca.gov](http://www.P65Warnings.ca.gov).