



SYMMONS® DS Creations

the smart choice™

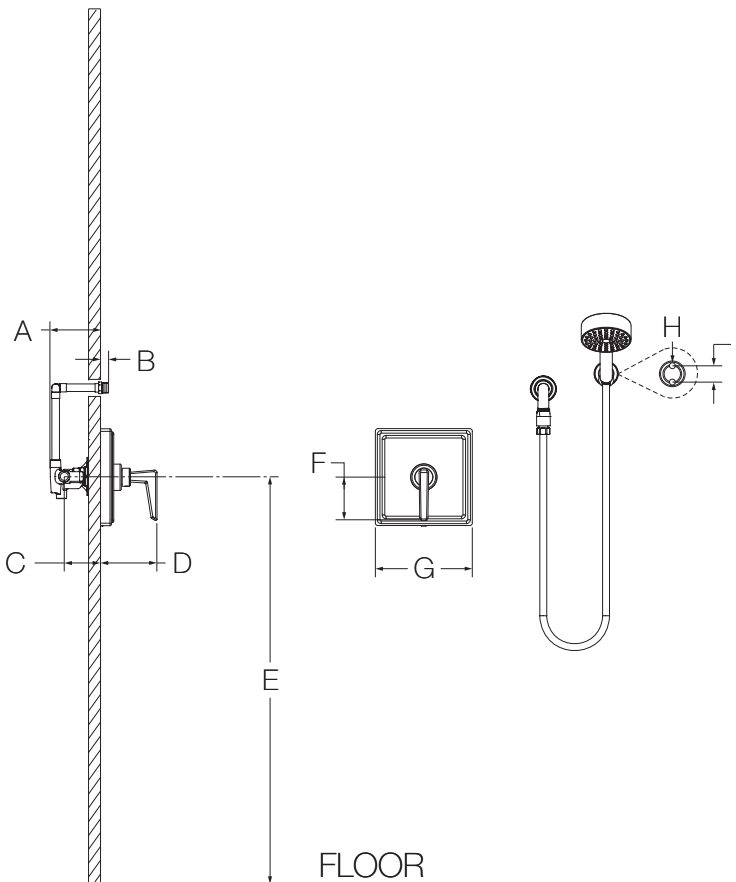
0286-03-HS-TRM (CD0286-03-HS-TRM)

Hand Shower Trim Installation Guide



| Model Numbers | Specification |
|--|---|
| <input type="checkbox"/> 0286-03-HS-TRM <i>Hand Shower Trim</i> | Hand Shower Trim shall include metal lever handle, in-line vacuum breaker, 60" flexible metal hose, multimode hand shower and 2.5 gpm (9.5 L/min) flow restrictor. Hand Shower trim shall be made from metal construction, plated in standard polished chrome finish. |
| Warranty Limited Lifetime - to the original end purchaser in consumer/residential installations. 5 Years - for industrial/commercial installations. Refer to www.symmons.com/warranty for complete warranty information. | |

Dimensions

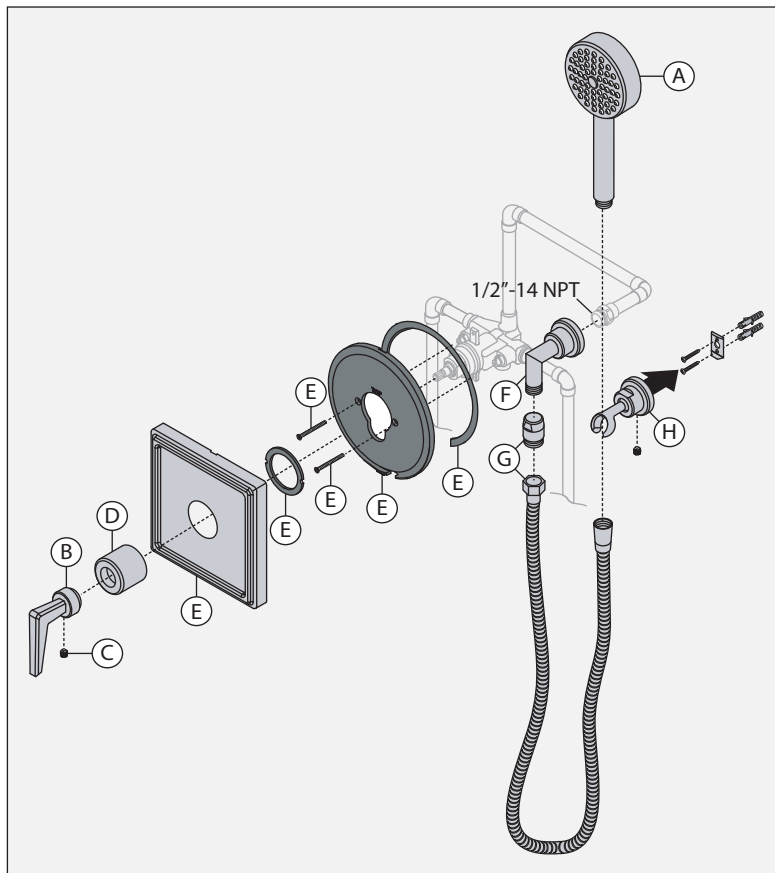


| Measurements | |
|--------------|--|
| A | 3-1/2", 89 mm |
| B | Male 1/2 NPT fitting must protrude 1/2", 13 mm |
| C | Rough-in 2-3/8" ± 1/2", 60 mm ± 13 mm |
| D | 4-3/8", 111 mm |
| E | Ref. 42", 1067 mm |
| F | 3-5/16", 84 mm |
| G | 7-1/2", 191 mm |
| H | (2x) Hole Size Ø 1/4", 6 mm |
| I | 3/4", 19 mm |

Notes:

- 1) All dimensions measured from nominal rough-in (see C as reference).
- 2) Dimensions subject to change without notice.

Parts Breakdown





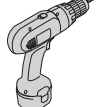
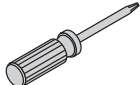

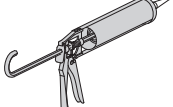
Notes:

- 1) Apply a bead of silicone around the perimeter of all shower trim installed flush to the finished wall (less mounting plates and brackets). Leave opening on bottom of escutcheon for weep hole.
- 2) Apply plumber tape to all threaded connections.

Replacement Parts

| Item | Description | Part Number |
|------|---------------------------------|-------------|
| A | Hand Shower | HS-03165 |
| B | Handle | RTS-030 |
| C | Set Screw | |
| D | Dome Cover | RTS-036 |
| E | Escutcheon Kit | RTS-046 |
| F | Wall Ell | RTS-072 |
| G | Vacuum Breaker & 60" Metal Hose | EF-104 |
| H | Cradle | RTS-053 |

Tools Required for Installation

| | |
|---|---|
| Adjustable Wrench |  |
| Allen Wrench: Handle (3 mm) Cradle (2.5 mm) |  |
| Drill |  |
| Phillips Head Screwdriver |  |
| Plumber Tape |  |
| Silicone |  |

⚠ WARNING: This product can expose you to chemicals including lead, which is known to the state of California to cause cancer, birth defects, or other reproductive harm. For more information, go to www.P65Warnings.ca.gov.