

TUB/SHOWER/HAND SHOWER TRIM

MODEL: 0488-3506-T736-2.0-TRM

INSTALLATION GUIDE

FEATURE HIGHLIGHTS

Tub/Shower/Hand Shower Trim shall include metal lever handles, shower arm with decorative flange, hand shower coupling with flange, in-line vacuum breaker, non-diverter tub spout, ADA 1 mode hand shower and 1 mode showerhead with 2.0 gpm (7.6 L/min) flow restrictors.

Tub/Shower/Hand Shower Trim shall be metal construction plated in standard polished chrome finish.

MODIFICATIONS

- **-1.75** **CG** 1.75 gpm (6.6 L/min) flow restrictor

Note: Append appropriate -suffix to model number.

COMPLIANCE

- ASME A112.18.1/CSA B125.1
- ASSE 1014 (in-line vacuum breaker for back flow protection)

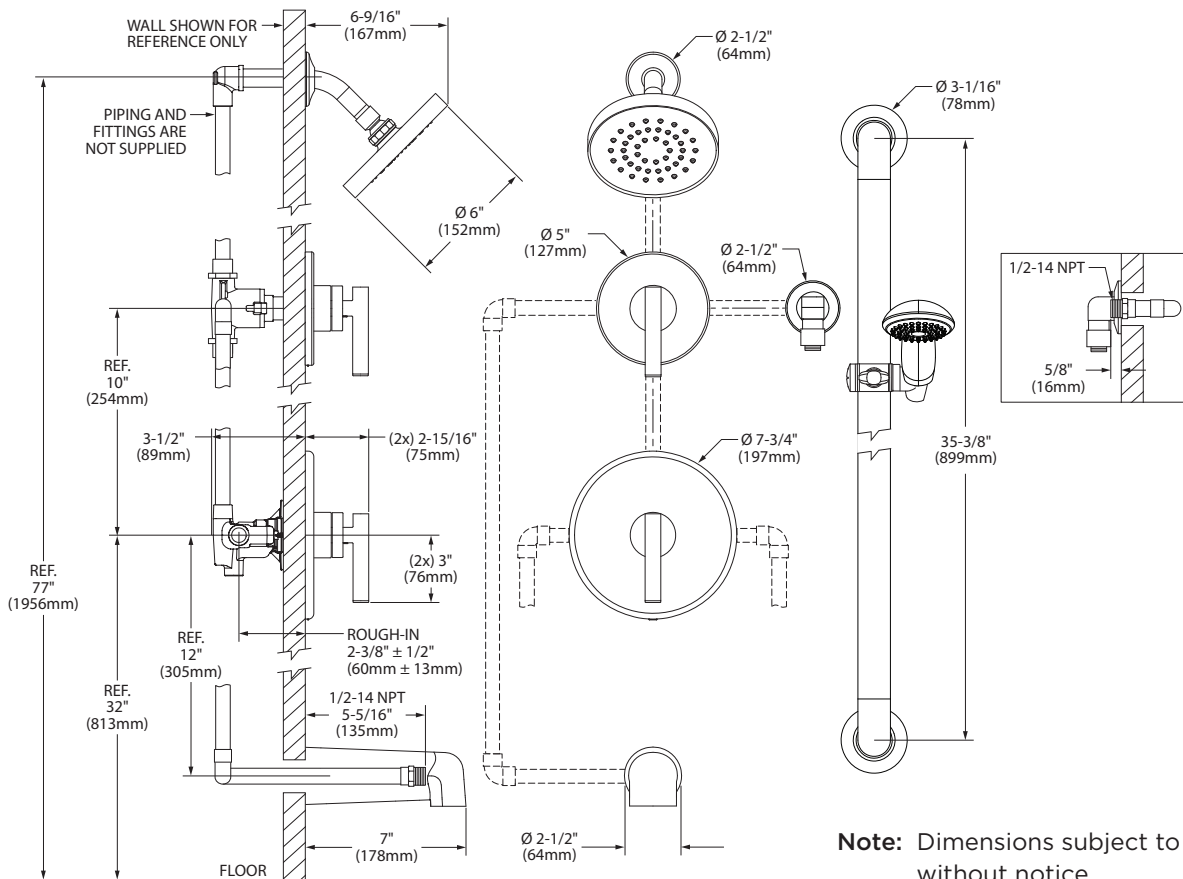


WARRANTY

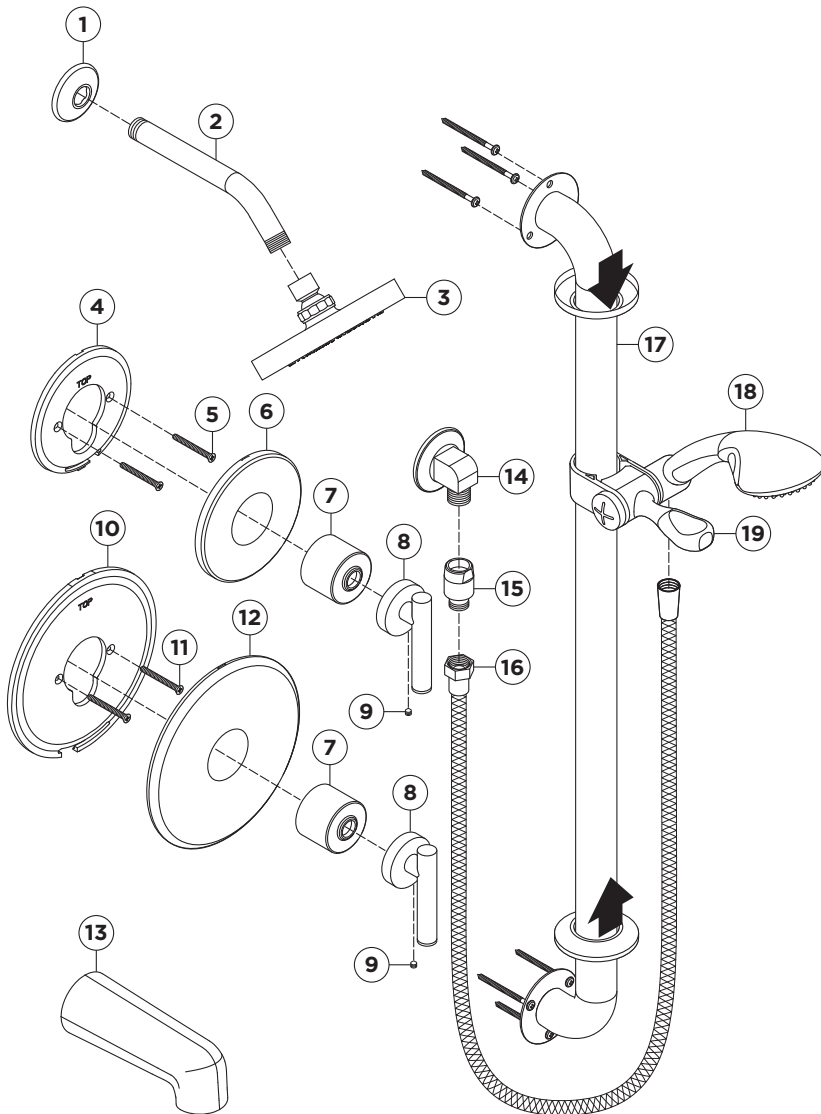
5 Years - for industrial/commercial installations.

Refer to symmons.com/warranty for complete warranty information.

DIMENSIONS





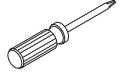

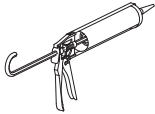
INSTALLATION/PARTS BREAKDOWN



Notes:

- 1) Apply a bead of silicone around the perimeter of all shower trim installed flush to the finished wall (less mounting plates and brackets). Leave opening on bottom of escutcheon for weep hole.
- 2) Apply plumber tape to threaded connections as necessary. DO NOT use plumber tape on fittings with face seal washers or o-rings.

| Item | Description | Part Number |
|------|-------------------------------------|---------------------------|
| 1 | Flange | 300S |
| 2 | Shower Arm | 300S |
| 3 | Showerhead 2.0 Showerhead 1.75 | 532SH-2.0 532SH-1.75 |
| 4 | Mounting Plate | T-416A |
| 5 | Mounting Screws | |
| 6 | Diverter Escutcheon | |
| 7 | Dome Cover | T-19 |
| 8 | Handle | T-242A |
| 9 | Set Screw | |
| 9 | Set Screw | S2H-8D |
| 10 | Mounting Plate | T-237NSP-K002 |
| 11 | Mounting Screws | |
| 12 | Shower Escutcheon | |
| 13 | Tub Spout | 067 |
| 14 | Wall Elbow | FP-40 |
| 15 | Vacuum Breaker | EF-104 |
| 16 | 60" Hose | |
| 17 | Slide Bar Assembly | T-600B-36 |
| 18 | Hand Shower 2.0 Hand Shower 1.75 | ADACHS-2.0 ADACHS-1.75 |
| 19 | Slide Mechanism | FP-SM6 |

| Tools Required | |
|---------------------------------|---|
| Adjustable Wrench |  |
| Allen Wrench: Handle (3/16") |  |
| Phillips Head Screwdriver |  |
| Plumber Tape |  |
| Silicone |  |

WARNING: This product can expose you to chemicals including lead, which is known to the state of California to cause cancer, birth defects, or other reproductive harm. For more information, go to www.P65Warnings.ca.gov.