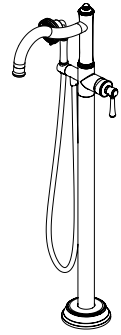




Location:



FSTF5872

Floor Standing Tub Filler

Specification Submittal

Model Numbers	Feature Highlights
<input type="checkbox"/> <b>FSTF5872</b> <i>Floor standing tub filler</i>	<ul style="list-style-type: none"><li>• Ceramic cartridge</li><li>• Push button to divert from spout to hand shower</li><li>• 60" flexible metal hose</li><li>• Dual check valves</li><li>• 2.0 gpm (7.6 L/min) hand shower</li><li>• Floor Standing Tub Filler shall be metal construction plated in standard polished chrome finish</li><li>• 5.3 gpm (20.1 L/min) at 45 psi tub filler</li><li>• 6.5 gpm (24.6 L/min) at 60 psi tub filler</li></ul>
Options/ Modifications	
<input type="checkbox"/> <b>STN</b> <i>Satin nickel finish</i>	
<input type="checkbox"/> <b>MB</b> <i>Matte black finish</i>	
<input type="checkbox"/> <b>BBZ</b> <i>Brushed bronze finish</i>	
<b>Note:</b> Append appropriate suffix to model number.	
Compliance	Warranty
<ul style="list-style-type: none"><li>- ASME A112.18.1</li><li>- CSA B125.1</li></ul> <div></div>	<p><b>Limited Lifetime</b> - to the original end purchaser in consumer/residential installations.</p> <p><b>10 Years</b> - for commercial/industrial installations. Refer to <a href="http://www.symmons.com/warranty">www.symmons.com/warranty</a> for complete warranty information.</p> <div></div>

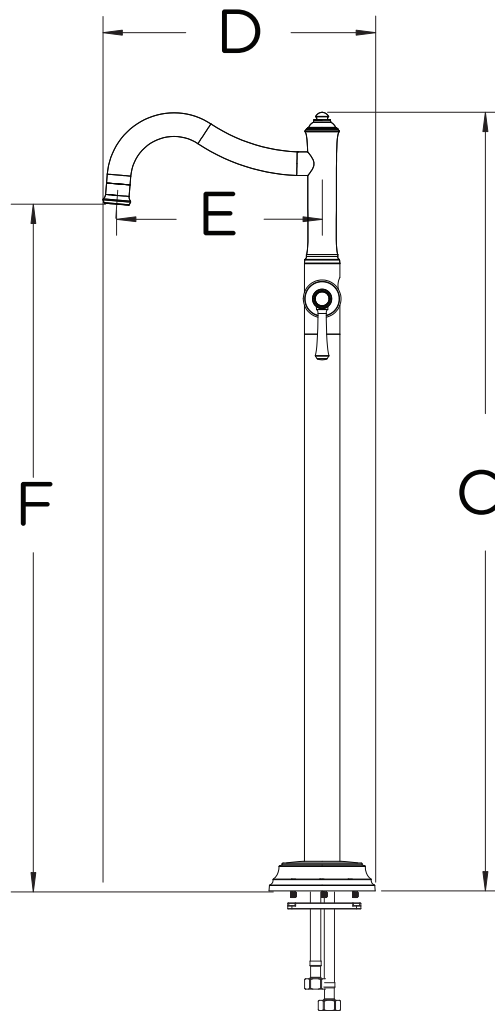
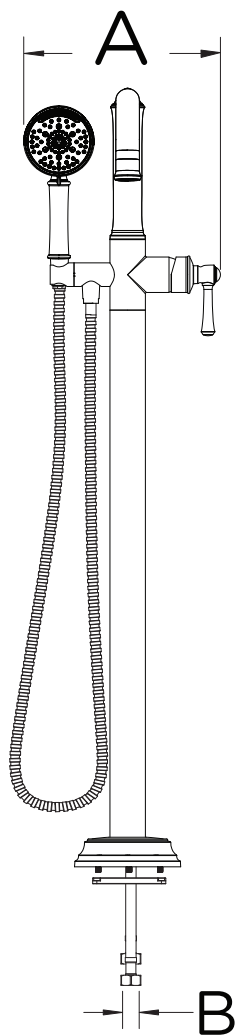
### SKU Builder

Series	Finish	Modifier	Flow Rate	Trim (required)	Test Cap	Final SKU
FSTF5872	MB					FSTF5872MB

### Architectural/Engineering Specification

Symmons Braston® Floor Standing Tub Filler \_\_\_\_\_ Includes Ceramic cartridge, Push button to divert from spout to hand shower, 60" flexible metal hose, Dual check valves, 2.0 gpm (7.6 L/min) hand shower, Floor Standing Tub Filler shall be metal construction plated in standard polished chrome finish, 5.3 gpm (20.1 L/min) at 45 psi tub filler, 6.5 gpm (24.6 L/min) at 60 psi tub filler. 10 Year Commercial Warranty. ASME A112.18.1/CSA B125.1 complaint. Available options: "STN - Satin Nickel finish", "MB - Matte Black finish", "BBZ - Brushed Bronze finish".

# Dimensions

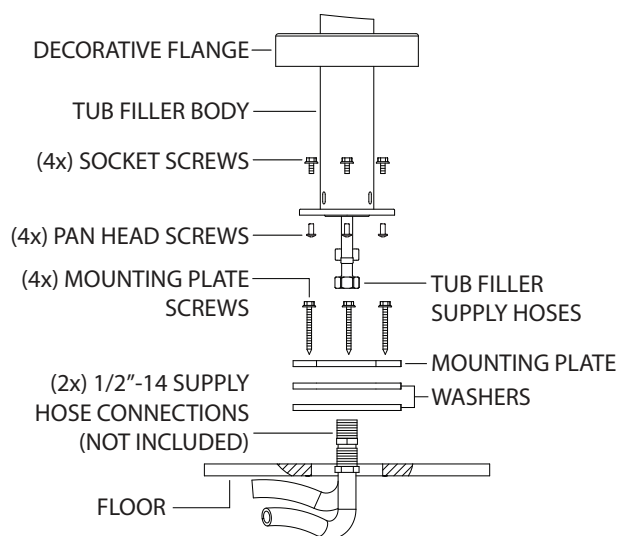
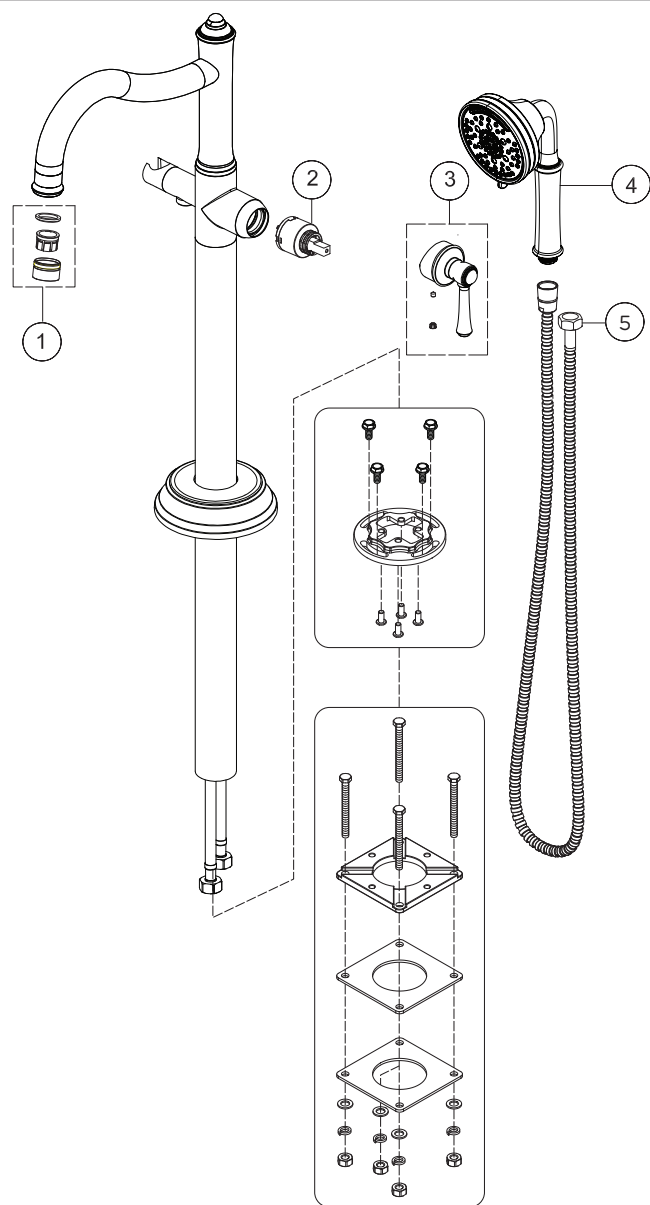


Measurements	
A	10-1/16", 256mm
B	2X1/2-14NPSM
C	38-15/16", 988mm
D	13-5/8", 345mm
E	10-1/4", 261mm
F	34-5/16", 872mm

## Notes:

1) Dimensions subject to change without notice.

Installation/Parts Breakdown



Item	Description	Part Number
1	Stream Straightner, with housing	FLR-06026*
2	Cartridge	RT-05173
3	Handle Kit	RT-#####*
4	Hand Shower	RT-#####*
5	60" HOSE	RTS-045*

\*Note: Append STN, MB, or BBZ to part number for premium finish.

Tools Required	
Adjustable Wrench	
Drill	
Phillips Head Screwdriver	
Plumber Tape	
Safety Glasses	
Silicone	

Installation Notes:

- 1) Apply a bead of silicone around the perimeter of all faucet trim installed to deck surface.
- 2) Apply plumber tape to threaded connections as necessary. DO NOT use plumber tape on fittings with face seal washers or o-rings.
- 3) DO NOT OVERTIGHTEN fittings with face seal washers or o-rings.