



Hand Shower, 76HS-RP

Installation Brief

Model Number

76HS-RP Hand Shower

Compliance

ASME A112.18.1/CSA B125.1

WaterSense 1.75 gpm (6.6 L/min)



For California Residents

WARNING: This product contains chemicals known to the State of California to cause cancer, birth defects, or other reproductive harm.

Tools and Materials



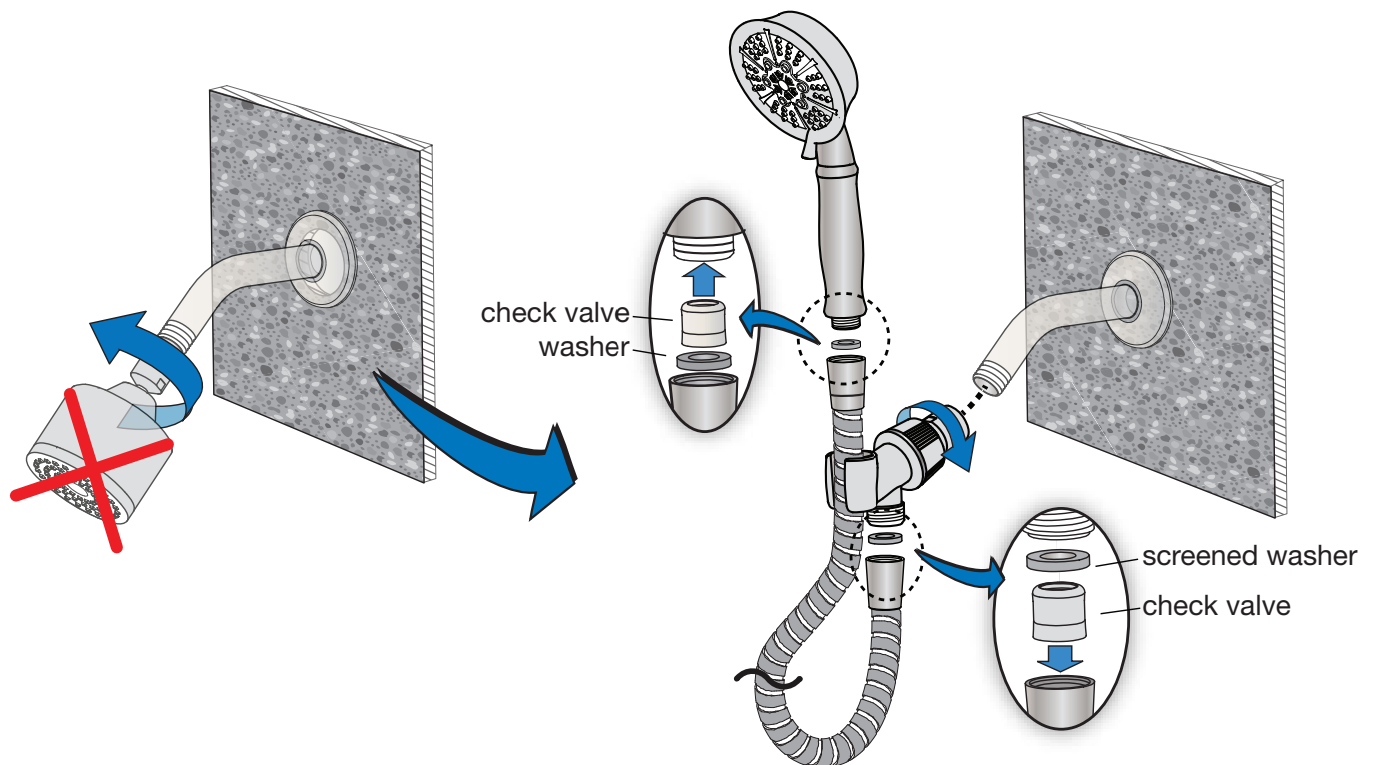
Need Help?

Symmons customer service:
 (800) 796-6667, (781) 848-2250
customerservice@symmons.com
 Mon - Fri 7:30 am - 7:00 pm EST

www.symmons.com/service

- Technical help
- Product information
- Warranty policy

Quick Install Guide Hand Shower, 76HS-RP



Ducha de mano, 76HS-RP

Instalación Breve



Número de los modelos

76HS-RP Ducha de mano

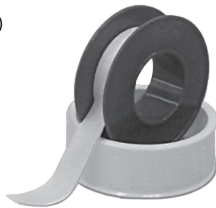
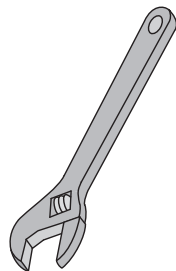
Conformidad

ASME A112.18.1/CSA B125.1

WaterSense 1.75 gpm (6.6 L/min)



Herramientas y materiales



incluido

☎ ¿Necesita ayuda?

Servicio al cliente de Symmons:
(800) 796-6667, (781) 848-2250
customerservice@symmons.com
De lunes a viernes de 7:30 am a 7:00 pm hora del este

💻 www.symmons.com/service

- Asistencia técnica
- Información del producto
- Política de garantía.

Guía de instalación rápida Ducha de mano, 76HS-RP

