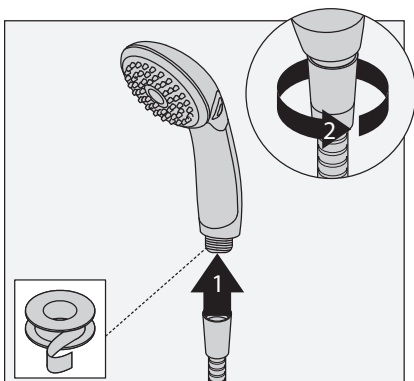




## Installation

- 1) Attach hose to hand shower wand. Turn clockwise to tighten.



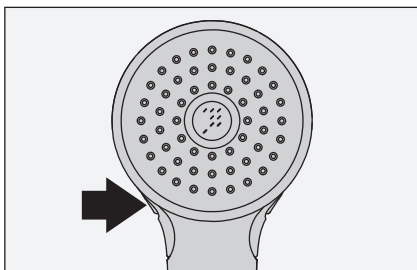
### Tools Required

Plumber  
tape

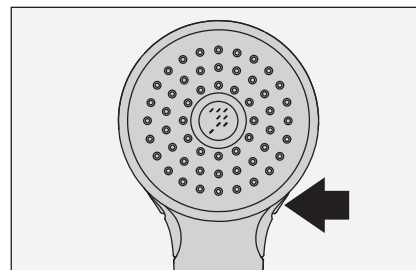


## Operation

- 1) Push button on left side of hand shower wand for full volume.



- 2) Push button on right side of hand shower wand to reduce volume to a trickle.



## Troubleshooting Chart

Problem	Cause	Solution
Finish is spotting.	Elements in water supply may cause water staining on finish.	Clean finished trim area with a soft cloth using mild soap and water or a non-abrasive cleaner and then quickly rinse with water.