



# SYMMONS® DS Creations

the smart choice™

S0181-OTS-2.0-TRM (CDS0181-3602-OTS-2.0-TRM)

Tub/Shower Trim

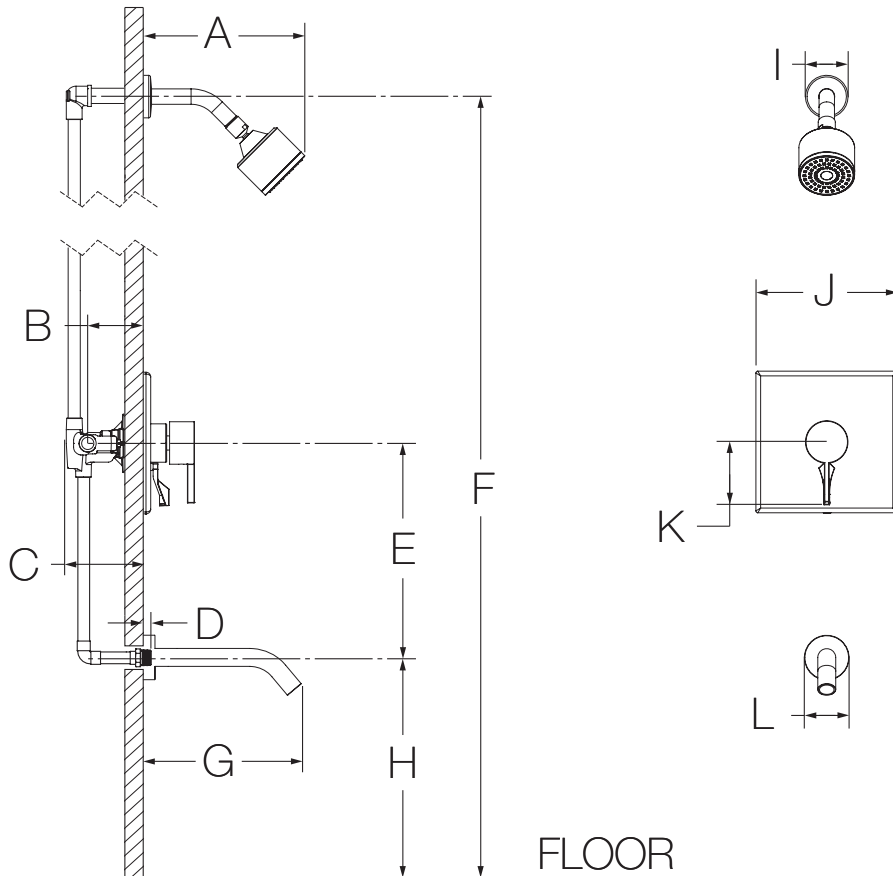
## Installation Guide



Model Numbers	Specification
<input type="checkbox"/> <b>S0181-OTS-2.0-TRM</b> <i>Tub/Shower Trim</i>	Tub/Shower Trim shall include metal lever handle, 8" non-diverter tub spout, 1 mode showerhead and 2.0 gpm (7.6 L/min) flow restrictor. Tub/Shower trim shall be made from metal construction, plated in standard polished chrome finish.
<b>Warranty</b>  <b>Limited Lifetime</b> - to the original end purchaser in consumer/residential installations. <b>5 Years</b> - for industrial/commercial installations. Refer to <a href="http://www.symmons.com/warranty">www.symmons.com/warranty</a> for complete warranty information.	



## Dimensions

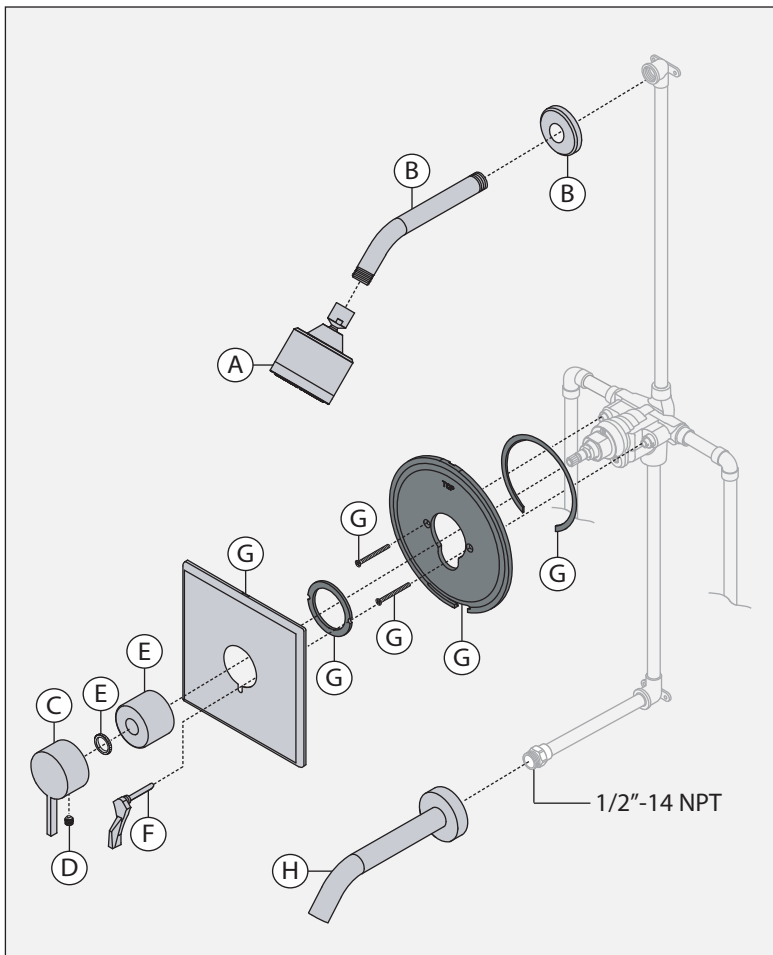


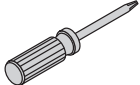

Measurements	
A	8-1/2", 216 mm
B	Rough-in 2-3/8" ± 1/2", 60 mm ± 13 mm
C	3-1/2", 89 mm
D	1/2", 13 mm
E	Ref. 12", 305 mm
F	Ref. 77", 1956 mm
G	8-3/8", 212 mm
H	Ref. 32", 813 mm
I	Ø 2-1/4", 57 mm
J	7-1/2", 191 mm
K	3-3/16", 81 mm
L	Ø 2-3/8", 60 mm

### Notes:

- 1) All dimensions measured from nominal rough-in (see B as reference).
- 2) Dimensions subject to change without notice.

## Parts Breakdown



Replacement Parts		
Item	Description	Part Number
A	Showerhead	352SH-2.0
B	Shower Arm & Flange	300
C	Handle	RTS-021
D	Set Screw	RTS-021
E	Lock Nut & Dome Cover	T-19/20
F	Diverter Handle	T-30
G	Escutcheon Kit	RTS-002
H	Tub Spout	OTS
Tools Required for Installation		
Allen Wrench: Handle (3mm)		
Phillips Head Screwdriver		
Plumber Tape		
Silicone		

### Notes:

- 1) Apply a bead of silicone around the perimeter of all shower trim installed flush to the finished wall (less mounting plates and brackets). Leave opening on bottom of escutcheon for weep hole.
- 2) Apply plumber tape to all threaded connections.

**⚠ WARNING:** This product can expose you to chemicals including lead, which is known to the state of California to cause cancer, birth defects, or other reproductive harm. For more information, go to [www.P65Warnings.ca.gov](http://www.P65Warnings.ca.gov).