



SYMMONS

Location:

Temptrol®
Commercial



C-96-400-B30-V-X, C-96-400-B30-V-TRM & C96400B30TRMTC
Tub/Hand Shower System & Trim

Specification Submittal

Model Numbers

- C-96-400-B30-V-X** Tub/Hand Shower System with Temptrol Pressure Balancing Tub/Shower Valve
- C-96-400-B30-V-TRM** Tub/Hand Shower Trim, Temptrol Pressure Balancing Tub/Shower Valve ordered separately
- C96400B-30TRMTC** Tub/Hand Shower Trim with TA-10 flow control spindle and T-12A cap assembly, must order Temptrol valve with Test Cap

Feature Highlights

- Temptrol Commercial Tub/Hand Shower System or Trim
- Requires Temptrol® Pressure Balancing Tub/Shower Valve (included with C-96-400-B30-V-X)
- Integral service stops allow water shutoff at valve for service (included with C-96-400-B30-V-X)
- Adjustable stop screw to limit hand turn (included with C-96-400-B30-V-X)
- Metal lever handle
- Dual checks for backflow protection
- 30" slide bar for hand shower
- 60" flexible metal hose
- 5-1/2" diverter tub spout
- 1 mode hand shower
- 2.0 gpm (7.6 L/min) flow restrictor
- Showerhead not included
- Components shall be metal and nonmetallic construction, plated in standard Polished Chrome finish
- Available with TA-10 flow control spindle and T-12A cap assembly for Temptrol valve bodies installed with Test Cap (order p/n C96400B30TRMTC)

Options/ Modifications

- 1.5** **1.5 gpm (5.7 L/min) flow restrictor**
- L7** **Less handle**
- Delete Suffix X** **Less integral service stops**
- VP** **Vandal resistant escutcheon screws in place of standard screws**

Note: Append appropriate -suffix to model number.

Compliance

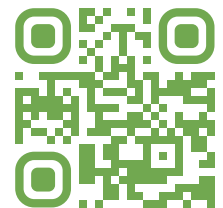
- ASME A112.18.1/CSA B125.1



Warranty

Limited Lifetime - to the original end purchaser in consumer/residential installations.

10 Years - for commercial/industrial installations. Refer to www.symmons.com/warranty for complete warranty information.



Architectural/ Engineering Specification

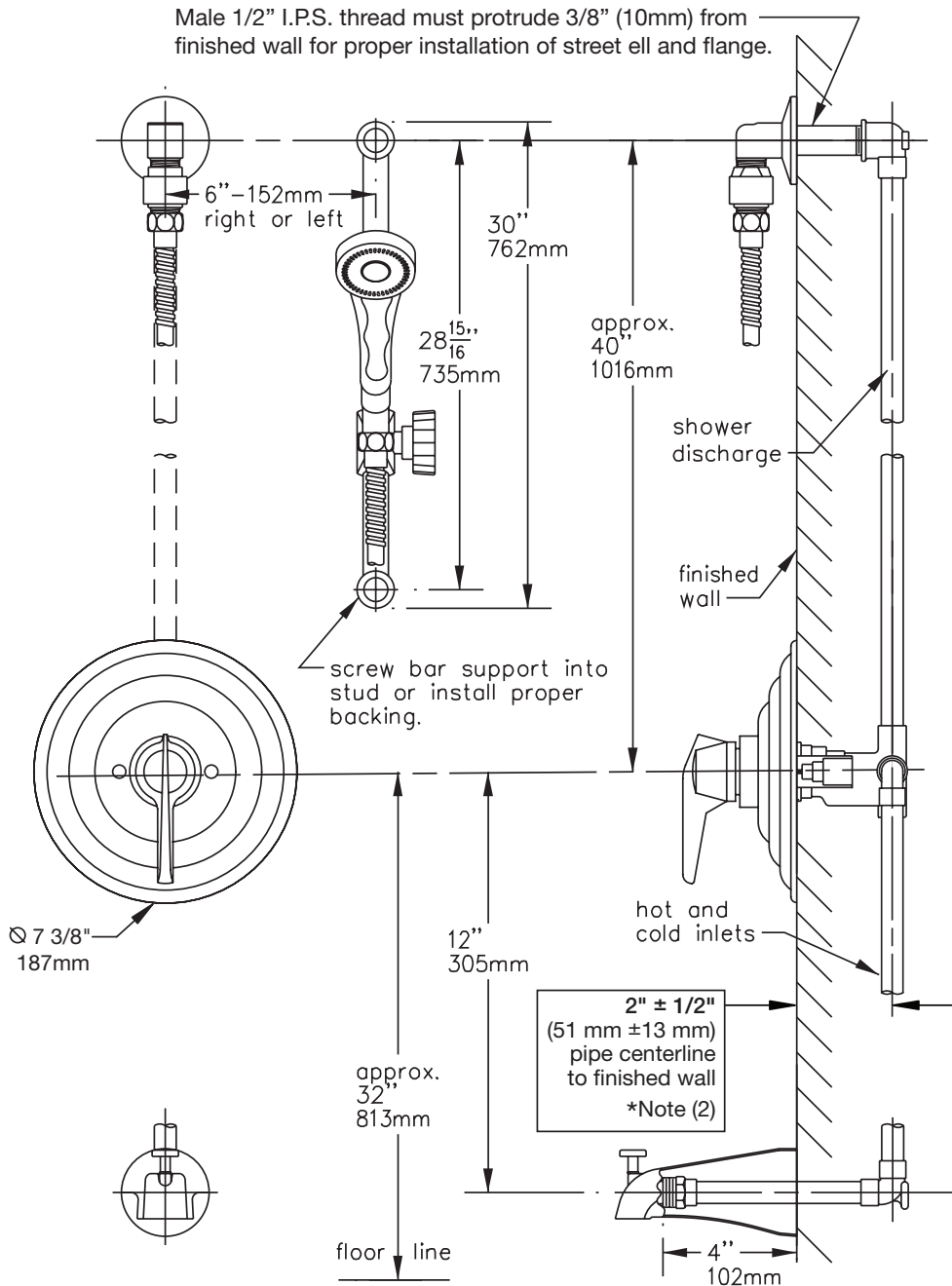
Symmons Temptrol and Commercial Tub and Hand Shower System or Trim _____ Includes Temptrol Commercial Tub/Hand Shower System or Trim, Requires Temptrol® Pressure Balancing Tub/Shower Valve (included with C-96-400-B30-V-X), Integral service stops allow water shutoff at valve for service (included with C-96-400-B30-V-X), Adjustable stop screw to limit hand turn (included with C-96-400-B30-V-X), Metal lever handle, Dual checks for backflow protection, 30" slide bar for hand shower, 60" flexible metal hose, 5-1/2" diverter tub spout, 1 mode hand shower, 2.0 gpm (7.6 L/min) flow restrictor, Showerhead not included, Components shall be metal and nonmetallic construction, plated in standard Polished Chrome finish, Available with TA-10 flow control spindle and T-12A cap assembly for Temptrol valve bodies installed with Test Cap (order p/n C96400B30TRMTC). 10 Year Commercial Warranty. ASME A112.18.1/CSA B125.1 compliant. Available options: "1.5 - 1.5 gpm (5.7 L/min) flow restrictor", "L7 - Less handle", "Delete Suffix X - Less integral service stops", "VP - Vandal resistant escutcheon screws in place of standardscrews".



SYMMONS® Temptrol® Commercial

C-96-400-B30-V-X, C-96-400-B30-V-TRM & C96400B30TRMTC

Dimensions



Notes:

- 1) Valve body and piping not included and shown as reference only.
- 2) Plaster shield (p/n T-176) for dry wall, plaster or other type walls 1/2" or greater.
- 3) All dimensions measured from nominal rough-in.
- 4) Dimensions subject to change without notice.