

# Location:









**SYMMONS**<sup>®</sup>

Origins<sup>®</sup>



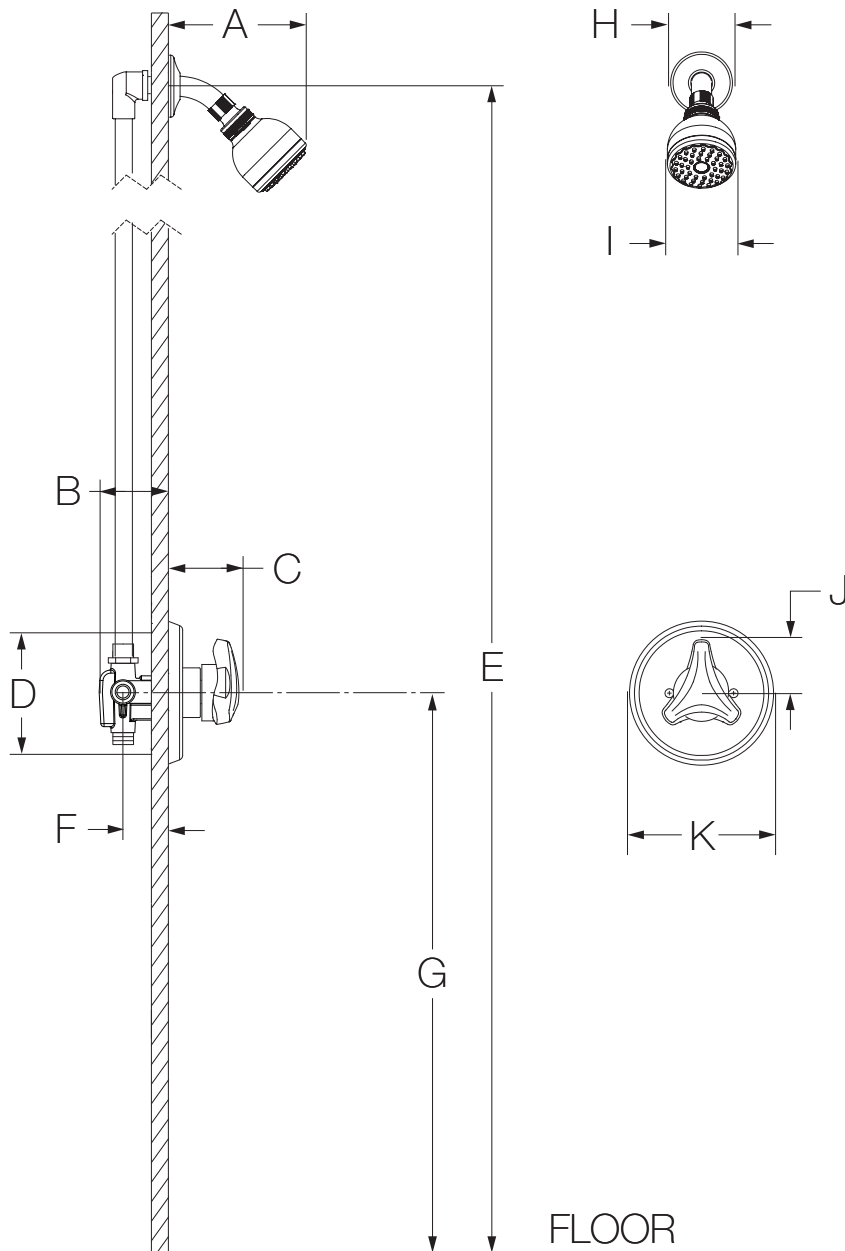
9601-P, 9601-P-TRM, 9601PTRMTC  
Shower Trim  
**Specification Submittal**

Feature Highlights	Options/Modifications
<ul style="list-style-type: none"> <li>Origins Shower System or Trim</li> <li>Requires Temptrol<sup>®</sup> Pressure Balancing Shower Valve (included with 9601-P)</li> <li>Adjustable stop screw to limit handle turn (included with 9601-P)</li> <li>Tri-star handle</li> <li>1 mode showerhead with easy to clean nozzles</li> <li>2.0 gpm (7.6 L/min) flow restrictor</li> <li>Tub spout not included</li> <li>Components shall be metal and nonmetallic construction, plated in standard Polished Chrome finish</li> <li>Available with TA-10 flow control spindle and T-12A cap assembly for Temptrol valve bodies installed with Test Cap (order p/n 9601PTRMTC)</li> </ul>	<ul style="list-style-type: none"> <li><input type="checkbox"/> <b>1.2</b>  1.2 gpm (4.5 L/min) flow restrictor</li> <li><input type="checkbox"/> <b>1.5</b>  1.5 gpm (5.7 L/min) flow restrictor</li> <li><input type="checkbox"/> <b>1.75</b>  1.75 gpm (6.6 L/min) flow restrictor</li> <li><input type="checkbox"/> <b>L1</b> Less showerhead</li> <li><input type="checkbox"/> <b>L4</b> Less head, arm and flange</li> <li><input type="checkbox"/> <b>L7</b> Less handle</li> <li><input type="checkbox"/> <b>VP</b> Vandal resistant escutcheon screws in place of standard screws</li> <li><input type="checkbox"/> <b>B</b> Brass escutcheon (chrome only)</li> <li><input type="checkbox"/> <b>x</b> Integral service stops - allows water shut-off at valve for service</li> </ul>
<p><b>Model Numbers</b></p>	<p><b>Note:</b> Append appropriate suffix to model number.</p>
<ul style="list-style-type: none"> <li><input type="checkbox"/> <b>9601-P</b> Shower Trim with Temptrol Pressure Balancing Shower Valve</li> <li><input type="checkbox"/> <b>9601-P-TRM</b> Shower Trim, Temptrol Pressure Balancing Shower Valve ordered separately</li> <li><input type="checkbox"/> <b>9601PTRMTC</b> Shower Trim with TA-10 flow control spindle and T-12A cap assembly, must order Temptrol valve with Test Cap</li> </ul>	<p><b>Compliance</b></p> <ul style="list-style-type: none"> <li>ASME A112.18.1/CSA B125.1</li> <li>WaterSense 1.5 gpm (5.7 L/min), 2.0 gpm (7.6 L/min)</li> <li>Buy American Act (9601-P only)</li> </ul> <div style="text-align: right;">   </div>
<p><b>Architectural/ Engineering Specification</b></p> <p>Symmons Origins _____ With Origins Shower System or Trim, Requires Temptrol<sup>®</sup> Pressure Balancing Shower Valve (included with 9601-P), Adjustable stop screw to limit handle turn (included with 9601-P, Tri-star handle, 1 mode showerhead with easy to clean nozzles, 2.0 gpm (7.6 L/min) flow restrictor, Tub spout not included, Components shall be metal and nonmetallic construction, plated in standard Polished Chrome finish, Available with TA-10 flow control spindle and T-12A cap assembly for Temptrol valve bodies installed with Test Cap (order p/n 9601PTRMTC) 10 Year Commercial Warranty. ASME A112.18.1/CSA B125.1, WaterSense 1.5 gpm (5.7 L/min), 2.0 gpm (7.6 L/min), complaint. Available options include: " 1.2 - 1.2 gpm (4.5 L/min) flow restrictor", " 1.5 - 1.5 gpm (5.7 L/min) flow restrictor", " 1.75 - 1.75 gpm (6.6 L/min) flow restrictor", "L1 - Less showerhead", " L4 - Less head, arm and flange", "L7 - Less handle", " VP - Vandal resistant escutcheon screws in place of standard screws", "B - Brass escutcheon (chrome only)", "X - Integral service stops - allows water shut-off at valve for service".</p>	<p><b>Warranty</b></p> <p><b>Limited Lifetime</b> - to the original end purchaser in consumer/residential installations.  <b>10 Years</b> - for commercial/industrial installations. Refer to <a href="http://www.symmons.com/warranty">www.symmons.com/warranty</a> for complete warranty information.</p> 

## Architectural/ Engineering Specification

Symmons Origins \_\_\_\_\_ With Origins Shower System or Trim, Requires Temptrol<sup>®</sup> Pressure Balancing Shower Valve (included with 9601-P), Adjustable stop screw to limit handle turn (included with 9601-P, Tri-star handle, 1 mode showerhead with easy to clean nozzles, 2.0 gpm (7.6 L/min) flow restrictor, Tub spout not included, Components shall be metal and nonmetallic construction, plated in standard Polished Chrome finish, Available with TA-10 flow control spindle and T-12A cap assembly for Temptrol valve bodies installed with Test Cap (order p/n 9601PTRMTC) 10 Year Commercial Warranty. ASME A112.18.1/CSA B125.1, WaterSense 1.5 gpm (5.7 L/min), 2.0 gpm (7.6 L/min), complaint. Available options include: " 1.2 - 1.2 gpm (4.5 L/min) flow restrictor", " 1.5 - 1.5 gpm (5.7 L/min) flow restrictor", " 1.75 - 1.75 gpm (6.6 L/min) flow restrictor", "L1 - Less showerhead", " L4 - Less head, arm and flange", "L7 - Less handle", " VP - Vandal resistant escutcheon screws in place of standard screws", "B - Brass escutcheon (chrome only)", "X - Integral service stops - allows water shut-off at valve for service".

## Dimensions



Measurements	
A	6-3/8", 162 mm
B	3-1/2", 89 mm
C	2-7/8", 73 mm
D	Shower Valve Hole Size Min. Ø 3", 76 mm Max. Ø 4", 102 mm
E	Ref. 77", 1956 mm
F	Rough-in 2-3/8" ± 1/2", 60 mm ± 13 mm
G	Ref. 42", 1067 mm
H	Ø 2-1/2", 64 mm
I	Ø 2-3/4", 70 mm
J	2-1/8", 54 mm
K	Ø 5-3/4", 146 mm

### Notes:

- 1) Valve body and piping not included and shown as reference only.
- 2) Plaster shield (p/n T-176) for dry wall, plaster or other type walls 1/2" or greater.
- 3) All dimensions measured from nominal rough-in (see F as reference).
- 4) Dimensions subject to change without notice.